

# Does an increase in promotion of health inequalities training have the potential to reduce gaps in health inequalities?

## Problem

Health inequalities are now widely recognised as a problem in society. Healthcare has a role in this. But even now, many people working in primary care know nothing about it – so how can we change this?

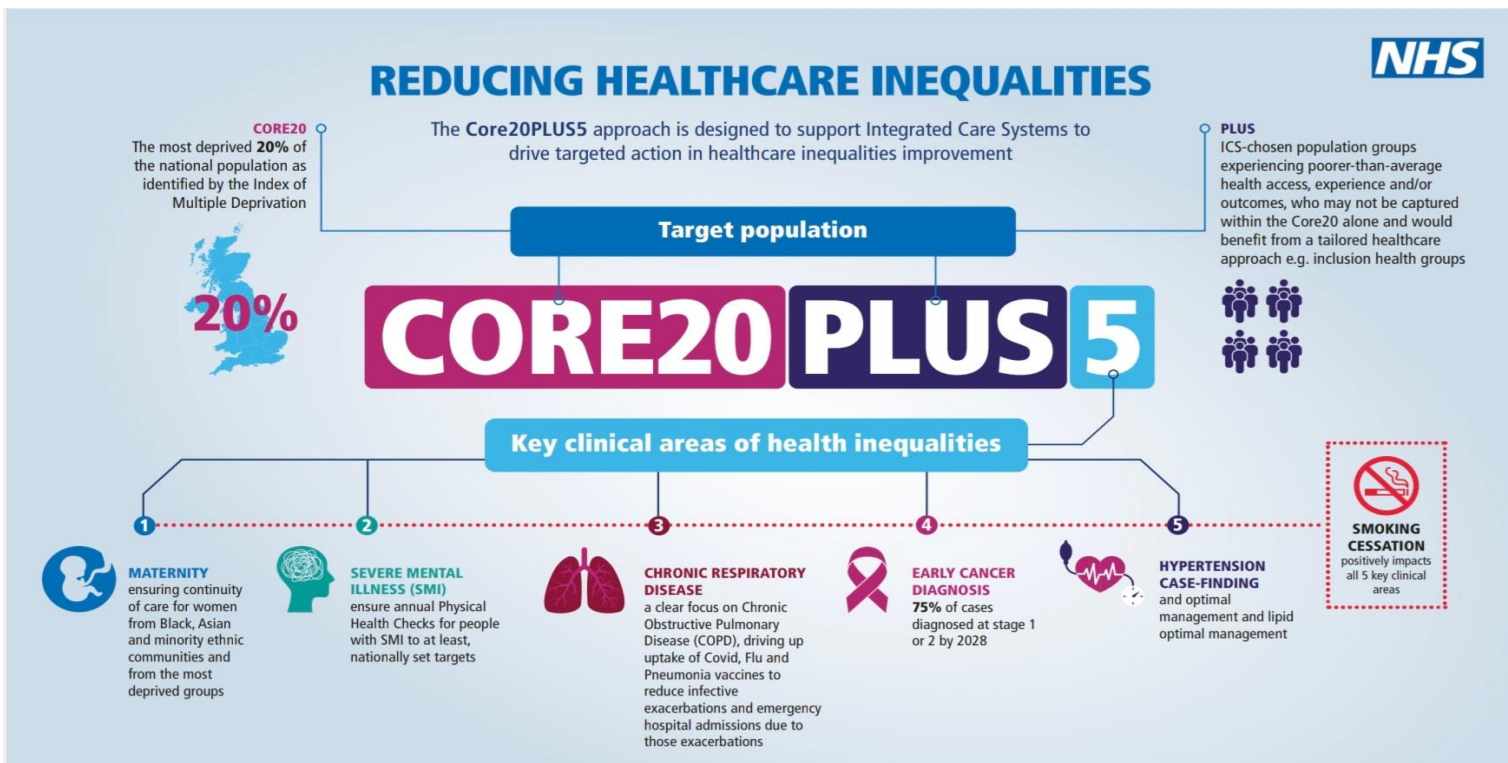
## Project Aim

To assess awareness of current health inequalities training and create better health inequalities training in Derbyshire

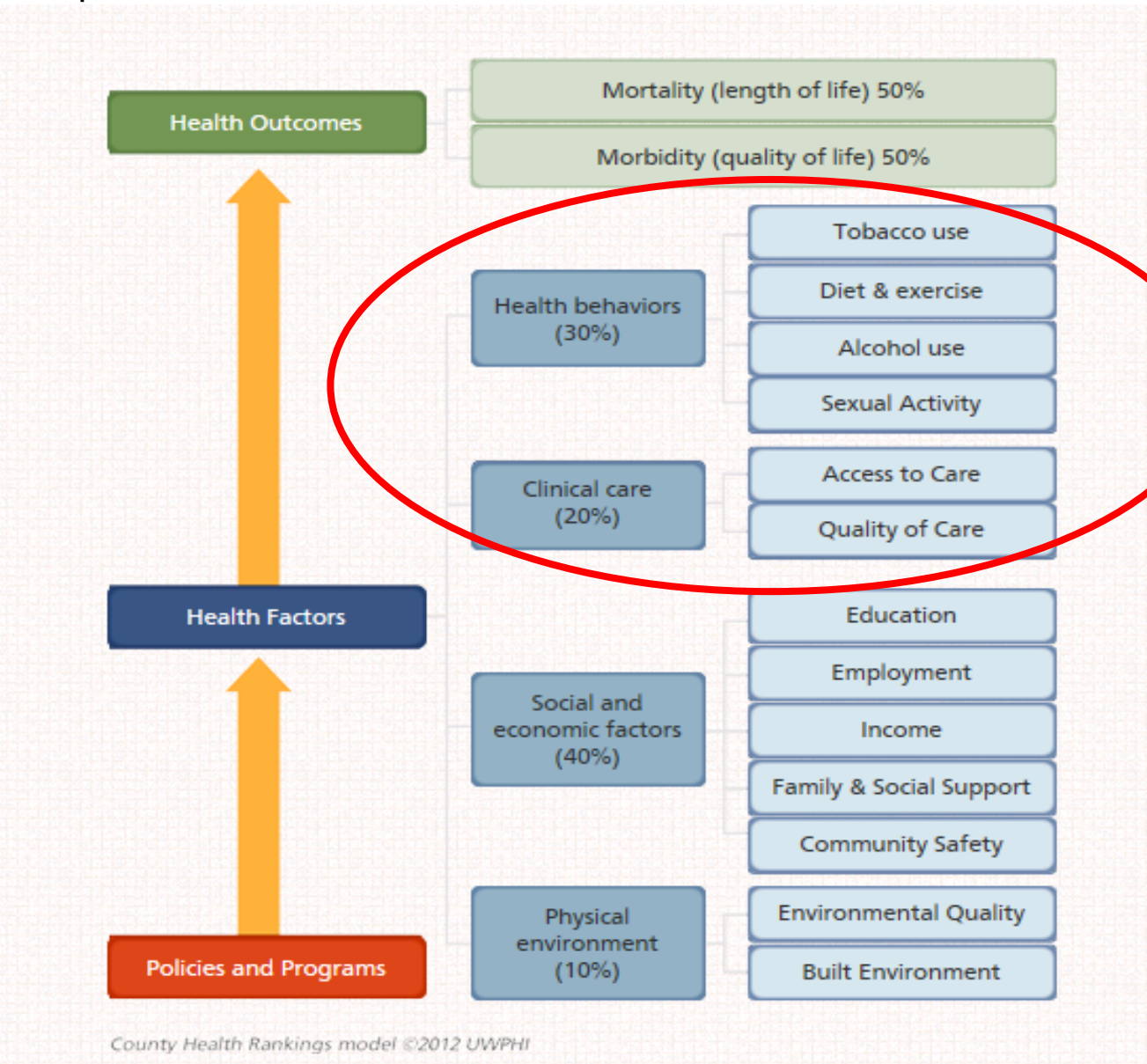


## BACKGROUND

Health inequalities are “differences in health across the population, and between different groups in society, that are systematic, unfair and avoidable”<sup>1</sup>.



Core20PLUS5 is a national NHS England approach to support the reduction of health inequalities at both national and system level. The approach defines a target population cohort and identifies '5' focus clinical areas requiring accelerated improvement.<sup>2</sup>



Primary care has influence in 50% of the contributing factors through clinical care, access to care, health promotion and disease prevention<sup>3</sup>.

Life expectancy (years)	Male	Female
National	73.5-83.2	78.3-86.3
Derby City	77.5	81.6
Derbs. County	79.1	82.4

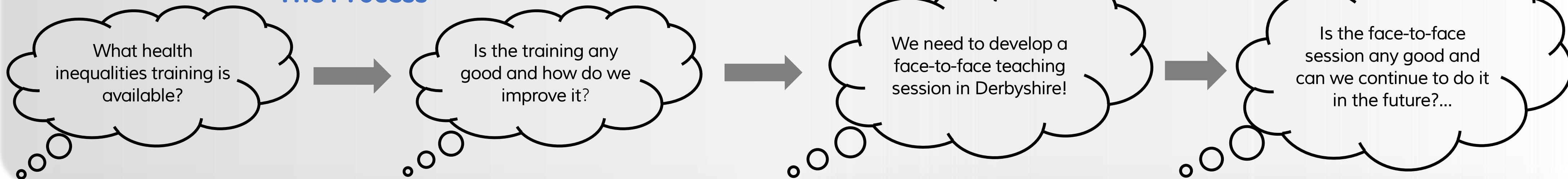
Table showing life expectancy variation across the country – between the most and least deprived areas<sup>4,5,6</sup>

## What did we initially find?

Derby & Derbyshire Health Inequalities Quality Improvement Questionnaire

- 31 respondents across Derby City, Derbyshire North and South
- 65% were non-clinical staff
- The average confidence in their understanding of health inequalities was 3.8 out of 5 (1 low, 5 high)
- 48% had never done any formal health inequalities training
- Only 29% had heard of Core20PLUS5

## The Process



## Feedback from the newly developed face-to-face teaching sessions

Session 1:

- Confidence (out of 5) in understanding of health inequalities increased from a mean of 2.75 to 4.44 (62% increase).

Session 2:

- Confidence (out of 5) in understanding of health inequalities increased from a mean of 2.05 to 4.03 (97% increase)

50% of attendees across the two face-to-face sessions reported intent to change their practice as a result of the session

## Conclusion and Reflection

- Basic educational session “Introduction to Health Inequalities” can have a significant impact on primary care professionals understanding and awareness of health inequalities
- There is potential for an increase in promotion of health inequalities training to begin to reduce gaps in inequalities.
- There was not enough time during the fellowship to evaluate whether colleagues who underwent training will implement change in their practice following the session

## Recommendation

More funding should be available to allow face-to-face teaching on health inequalities to continue in the future.

## References

1. NICE and health inequalities. *National Institute for Health and Care Excellence*. Updated: not known. Available at: <https://www.nice.org.uk/about/what-we-do/nice-and-health-inequalities> (Accessed: December 2023).
2. Core20PLUS5 (adults) – an approach to reducing healthcare inequalities. *NHS England*. Updated: not known. Available at: <https://www.england.nhs.uk/about/equality/equality-hub/national-healthcare-inequalities-improvement-programme/core20plus5/> (Accessed: December 2023)
3. Healthy Lives Resources Guide. *The Health Foundation*. Updated: January 2017. Available at: <https://www.health.org.uk/sites/default/files/HealthyLivesResourcesGuide.pdf> (Accessed: December 2023)
4. What is happening to life expectancy in England? *The King's Fund*. Updated 10/08/2022. Available at: <https://www.kingsfund.org.uk/insight-and-analysis/long-reads/whats-happening-life-expectancy-england> (Accessed: December 2023).
5. Local Authority Health Profiles. *Fingertips, Public Health Data*. Updated: not known. Available at: <https://fingertips.phe.org.uk/profile/health-profiles/data#page/1/ati/302/are/E06000015> (Accessed: December 2023).
6. Local Authority Health Profiles. *Fingertips, Public Health Data*. Updated: not known. Available at: <https://fingertips.phe.org.uk/profile/health-profiles/data#page/1/ati/302/are/E10000007> (Accessed: December 2023)

Dr Allie Hill, GP

*Derbyshire Health Inequalities Fellow 2023*